



New Plymouth Girls' High School

Te Kura Taitamawāhine o Puke Ariki



**WELCOME TO YOUR
NEW SCHOOL**

PRINCIPAL'S MESSAGE

Nau mai, haere mai ki New Plymouth Girls' High School, Te Kura Taitamawāhine o Puke Ariki

Welcome to a place where your educational journey truly begins - a kura that honours tradition, fosters excellence, and empowers young people to thrive.

At NPGHS, we believe in your potential. This is more than just a new chapter - it's a launchpad for discovery, growth, and connection. You'll be challenged academically, supported personally, and inspired to explore who you are and who you want to become.

Our classrooms are places of curiosity and creativity, where passionate teachers guide you through a broad curriculum designed to spark interest and deepen understanding. Whether you already know what excites you or are still exploring, there's space here for your passions to grow.

Beyond the classroom, life at NPGHS is vibrant and full of opportunity. From sports and performing arts to leadership and service, you'll find ways to connect, contribute, and celebrate your strengths. These experiences help shape confident, compassionate young women ready to make a positive impact.

Our school values - **Whakamana / Respect, Haepapa / Responsibility, and Whanaungatanga / Positive Relationships** - are woven into everything we do. They guide how we learn, how we lead, and how we care for one another. You'll learn what these values mean in action and how they help build a strong, inclusive community.

Be brave, believe in yourself, and step forward with confidence. We are here to walk alongside you and your whānau, supporting you to give your best and reach your goals. Nau mai ki Te Kura Taitamawāhine o Puke Ariki.

Welcome to NPGHS - embrace every moment. This is your time!

Jacqui Brown
Principal



The best thing you can do for yourself is to take an opportunity.



VISION

To develop educated, confident young adults of outstanding character.

MISSION

Each young person will have the opportunity to discover and develop the necessary knowledge, skills, values and character to enable them to fulfil their potential.



“To be yourself in a world that is constantly trying to make you something else is the greatest accomplishment” - Ralph Waldo Emerson.

Stepping through the door into high school may seem overwhelming - trust me, I have been there. But at New Plymouth Girls' High School, we encourage you to be authentically yourself. Because when you back yourself, stay true to yourself, and are proud of who you are, the self-belief you unlock is more powerful than any obstacle. This is where goals are not just met – goals are exceeded. Be Unapologetically Yourself.

Ngā mihi

Harriet Muller, Manu Tāiko / Head Girl, 2025

OUR VALUES

RESPECT

Whakamana

RESPONSIBILITY

Haepapa

RELATIONSHIPS

Whanaungatanga

OUR MOTTO

ET COMITATE

Friendship

Whakahoanga

ET VIRTUTE

Courage

Maia

ET SAPIENTIA

Wisdom

Matauranga

UNIFORM SHOP



Open for purchases during the term and in the school holidays, our onsite Uniform shop is run by NZ Uniforms and can be found in O Block.



NORMAL SHOP HOURS DURING TERM

Monday	9.30am – 4.00pm
Wednesday	11.00am – 4.00pm
Friday	9.30am – 2.30pm

Christmas Break – Back to School Sales

The shop will close for Christmas at 4.00pm on Monday 15 December 2025 and re-open on Monday 5 January 2026.

From 5 January – 14 February the shop will open with these hours:

5 - 17 January:	Monday/Wednesday/ Friday	9.30am – 4.00pm
	Saturday	9.00am – 1.00pm
19 - 31 January:	Monday - Friday	8.30am – 5.00pm
	Saturday	9.00am – 1.00pm
2 - 14 February:	Monday/Wednesday/Friday	9.30am – 4.00pm
	Saturday	9.00am – 1.00pm

Uniform can also be purchased online at <https://npghs.nzuniforms.com/>. Please visit the site to view the uniform prices. Any queries call: **06 920 3260**

Forms of payment include: Cash, Eftpos, ZIP or WINZ Card.

UNIFORM REQUIREMENTS

Uniform is to be worn correctly to and from school and during the school day.

FOR ALL LEVELS * All items are NPGHS Regulation uniform unless marked *

Shirt:	White shirt
Jersey:	Navy merino (non allergy) jersey
Footwear:	Black sandals with backstraps without socks or pantyhose/tights, Havaiana sandals are allowed (not surf wear sandals or jandals) Birkenstocks must have backstraps and are worn without socks. <i>OR</i> Black low heeled and plain polishable shoes with or without plain black pantyhose/tights or black ankle socks. No sports shoes, boots, or canvas shoes
Jacket:	School jacket only. No other jackets to be worn.
PE Uniform:	NPGHS PE shirt, black shorts*/trackpants*, sneakers*. Protective gear*, e.g. mouth guard*.
OPTIONAL*	Scarf: Plain black/navy*
	Headband: Plain black/navy*
	Hijab: Plain navy*

Any additional clothing worn under the uniform (eg. T-shirt/thermal) ***must not be visible.***

YEARS 9, 10 & 11

Skirt:	Tartan skirt. This is designed to be worn knee length but can be worn at a length that students and whānau/family are comfortable with.
Shorts/Trousers:	Navy shorts or navy trousers
le Lavalava:	NPGHS navy le lavalava

YEARS 12 & 13

Skirt:	Navy skirt. This is designed to be worn knee length but can be worn at a length that students and whānau/family are comfortable with.
Shorts:	Navy shorts or navy trousers.
le Lavalava:	NPGHS navy le lavalava
OPTIONAL	
Tie:	NPGHS tie
Blazer:	NPGHS blazer
Honours Blazer:	NPGHS Honours Blazer – awarded only

FORMAL DRESS

Representing NPGHS at formal occasions: Blazer and navy skirt/trousers/le lavalava, white shirt and tie (all regulation items).

JEWELLERY

Students are allowed to wear up to three earrings in each ear (either plain studs or sleepers), one facial piercing (silver or gold, metal pin-head sized, nose or lip piercing), a watch, one necklace and one bracelet.

No other items of jewellery are permitted. (*Rings of significance can be worn on a chain around the neck.*)

Taonga may be worn.

Makeup can only be worn if natural in appearance with no eyeshadow or lipstick permitted. No coloured nail polish or artificial/gel nails are allowed.

WAKA HUIA

Our Waka Huia are named after famous waka. All the waka have historical connections to Taranaki through tribal interactions and were part of the migration that settled New Zealand.

AOTEA

KURAHAUPO

TOKOMARU

TAINUI



SIGNIFICANT WAKA HUIA EVENTS:

Swimming Sports	Term 1
Athletics Day	Term 1
Waka Huia Plays	Term 2
Fun Run	Term 3
Waka Huia Singing	Term 3

WAKA HUIA DEPUTY PRINCIPALS



Suzanne Bradburn
sbradburn@npghs.school.nz

AOTEA



Stella Bond
sbond@npghs.school.nz

TAINUI



Michael Taylor
mtaylor@npghs.school.nz

TOKOMARU

ASSISTANT PRINCIPALS



Brett McFarlane
bmcfarlane@npghs.school.nz

KURAHAUPO



Mo Gleeson
mgleeson@npghs.school.nz

KURAHAUPO

A – Z OF NEW PLYMOUTH GIRLS' HIGH SCHOOL

ABSENCE FROM SCHOOL

If a student is absent from school parents/caregivers need to notify the school via SchoolBridge, or phone 7573899 (select 2).

If you arrive late to school go straight to class and sign in with your Subject Teacher.

If you have an appointment

- Caregivers need to request a pass via SchoolBridge, emailing attendance@npghs.school.nz or ringing the office.
- Attendance will print a leave pass to excuse students from class. This can be collected from Student Services during break times so that students can show the pass to their teacher and duty staff.

Do not leave the school grounds without a pass. Students cannot leave the grounds at interval, lunch or during lessons without a pass.

Please leave absence messages or leave requests before 9:00am.

Planned absences should be advised in advance by writing to the Principal.

ACTIVITIES

All students are encouraged to participate in a range of sporting and cultural activities. Check out our website or the School Prospectus for details.

ATTENDANCE

A roll is taken during every subject class, Kāwai Huia time, and assembly.

Parents/Caregivers can view student attendance via our secure KAMAR parent portal, accessed via SchoolBridge.

ASSESSMENT OF STUDENTS

Students in Years 9 to 13 are assessed in each subject in a variety of ways, such as topic tests, essays, assignments, projects, portfolios, practical work and models.

Subject Learning Areas determine how students are assessed and the timing of assessments.

BADGES AND AWARDS

Opportunities are available to all students at NPGHS to gain a variety of Badges and Awards. These acknowledge participation, commitment and service to the school, responsibilities held, and academic, sports and cultural achievements. As a school we enjoy the chance to celebrate the accomplishments of all our students. Further details can be found on our school website under 'School Life'.

BIKES

Cycles are to be housed in the covered school cycle racks behind N Block.

1. Students should enter and leave the school by Northgate/Mangorei Road.
2. Road rules must be observed.
3. Safety helmets must be worn at all times when on your bike.

BRING YOUR OWN DEVICE (BYOD)

We expect students to bring a laptop to school to support their learning.

We are a Microsoft Office 365 based school, and recommend a Windows 11 device, capable of running Microsoft Office.

It should be lightweight and robust enough to survive teenage life, have a battery life of six hours or longer, and enough RAM (min 8GB) and Solid State Storage (SSD – min 128 GB) for applications to run smoothly. A touch enabled device will provide the best learning experience.

Chromebook type devices are not recommended as experience shows users often have difficulties on our system.

If you have an existing laptop, don't buy a new one until the device no longer meets your needs. The school has some older loan laptops for students who cannot bring their own. Initially, these will be loaned on a daily basis from the library. Students will need to get it issued before 8.35am in the morning, and return it at the end of the day.



Students are responsible for the management of and appropriate use of their personal laptops/tablets at school in line with the school values.

All devices are brought to school at the owner's risk and are not covered by any school insurance. Parents and caregivers are advised to check the status of their own insurance cover for them.

On enrolment, students and parents must sign an ICT agreement indicating that they will follow the school's expectations surrounding computer and internet use before any access is allowed. Students must take responsibility for their own network username and password as this allows access to the school WiFi network.

The school filters internet access and blocks objectionable, offensive and inappropriate websites when students are accessing the internet. However, we cannot control students' internet access using their own data plans. The student's school MS Office 365 Account allows them to install MS Office on five personal devices.

BUSES

All buses to and from the school operate from the school entrance on Mangorei Road. Some leave from the school side and some from the sports field side. If you are crossing the road, you must use the pedestrian crossing and you must always follow the instructions of the staff on duty.

Travelling on a school bus is a privilege. You must behave appropriately and demonstrate our school values at all times. Travel is at the discretion of the bus company and they can refuse to transport students who are a disturbance to other passengers

Most buses that service our school are run by Transit and you will require a Bee Card to use them. Information about Bee Cards can be found here: <https://beecard.co.nz/>.

To find out more about specific routes within New Plymouth you can go to this website: <https://www.trc.govt.nz/buses-transport/routes> or you can download the Transit Realtime app to see up to date GPS details of your bus.

Withers Coachlines run the free MOE school buses to Egmont Rd, Smart Rd, Carrington Rd and Mangorei Rd. To find out if you qualify for one of these buses go to this website: <https://www.education.govt.nz/school/property-and-transport/transport/sta-eligibility>

If you are travelling from Hawera/Stratford you will need to use the Connector service run by Pickering Motors. For more information: <https://www.trc.govt.nz/buses-transport/routes/hawera-np-connector>

For more information about school buses, please refer to the Bus Information in our website Quicklinks section.

CAREER DEVELOPMENT

The Careers Department focuses on developing self-awareness, where students can recognise their strengths, interests, and values. Senior students are encouraged to enrol in courses such as Trades Academy/Work Placement/Classroom Learning. Throughout the year we host many speakers from a range of vocational ambassadors, which provide students with further insights into the career they are exploring.

CARPARKS

The school has limited visitor parking. Parents/caregivers should NOT drive into school to drop off or pick up



students.

There is no parking provided on site for students. Students who drive to school should park considerately in the surrounding streets and take note of Council parking restrictions.

CURRICULUM

New Plymouth Girls' High School offers a very full curriculum.

- Year 9, students have a taster programme where they experience 13 different curriculum choices.
- Year 10, students study seven core subjects and select three additional options for the year.
- Year 11, students all take English, Mathematics and Science and select three additional options.
- Year 12, all students take English and five other options and
- Year 13, students select five options and also have a study line.

Further information about curriculum and qualifications are available in the online Curriculum Booklet and the Qualifications Handbook which can be found under the 'Curriculum' menu on the school website.

CYBERSAFETY

New Plymouth Girls' High School is a Netsafe School and takes Cybersafety seriously. Being 'Cybersafe' is part of being a New Plymouth Girls' High School student. There are lots of ways to keep yourself 'cybersafe'. These include thinking carefully about what information you put online about yourself, what social networking and other internet sites you belong to and managing carefully how you use digital technologies to communicate and interact with others.

DAILY NOTICES

Students and whānau can read the Daily Notices via SchoolBridge. It is a student's responsibility to check the notices each day.

DIGITAL CITIZENSHIP

To be a good digital citizen you need to take RESPONSIBILITY to use and care for your digital devices properly. You should also consider your RELATIONSHIPS with others in how you use your digital devices, and finally you should RESPECT others when and how you use your digital device.

EMERGENCY / EVACUATION PROCEDURES

Emergency Procedures are on the wall in every classroom. Emergency practice drills are held through the year. The Evacuation Assembly area is on the Turf Courts.

HOMEWORK

New Plymouth Girls' High School has a clear expectation of homework as a valuable aspect of the learning process and as being important in developing sound study habits. Homework can be divided into either tasks set by the

teacher to be completed by a certain date, or revision time where you select what work to learn.

The following times are suggested guidelines:

Year 9 – 1 hour 20 minutes

Year 10 – 2 hours

Year 11 – 2½ hours

Year 12 & 13 – 3 hours plus per evening

It is the student's responsibility to make sure that they complete homework and meet set deadlines.

LEARNING SUPPORT

The Awhina Learning Centre team is made up of the Awhina Head of Department and the Awhina staff and is based at the Awhina Learning Centre beside the Hall.

The team offer a range of support to students, staff, and parents. Students are referred to the Awhina Learning Centre by previous schools, teachers, deans, parents, counsellors, and support staff or by the students themselves. Learning assistance is available to students with specific learning needs.



LIBRARY AND INFORMATION CENTRE

The New Plymouth Girls' High School Gwen Greenhill Library is a welcoming environment for reading, study, games and quiet chatter. It is the central hub of the school and is open from 8am each morning and closes at 4pm. The library is available at interval and lunchtimes with karaoke on a Friday lunchtime.

Devices can be borrowed on a daily basis. There is a great variety of books which can be issued for up to one month. Come in and enjoy our quiet, shared and safe space.

LOCKERS

At the start of every school year, lockers are available for students near to their Kāwai Huia Room. A school locker is used to provide security for student's belongings. Students must supply their own padlock and can choose their own locker as they are not allocated. Students are advised to keep devices and other valuables with them, not stored in lockers.

LOST PROPERTY

Please clearly name all student belongings and uniform.

If you lose something, please check the area where item was lost, then check at Student Services to see if the item has been handed in. If it has not yet been handed in, please give the Student Services staff a description of the item and your name. If it is handed in later, they will let you know.

Any found property is handed in to Student Services (in MB Block) and students can collect items from there directly. If an item is clearly named, staff will notify the student to collect their lost property.

Items such as drink bottles, lunchboxes, and clothing, which are unnamed and unclaimed at the end of term will be displayed outside Student Services on the final Thursday of term. Students are encouraged to check and claim any items which belong to them. Items that are not claimed will become loan uniform items, be donated to charity, or disposed of at the end of each term.

MAIN OFFICE

Come to the main office if you need to check your timetable or if you've forgotten your lunch, PE gear, musical instrument, etc. The Main Office is where parents and whānau can drop off forgotten items so you can pick them up at breaks.

MUSIC

It is possible to learn most musical instruments at school. Specialist music teachers are employed to provide tuition for individuals or groups. Some instruments can be taken home. The school has choirs, orchestras, bands and instrumental group activities. Check the notices regularly for information about these groups.



PAYMENTS

If you need to pay for something at school, you can use the myKindo app, just click the link at the top right of our website page.

Please reference the student name and reason for payment eg. Uniform, sports fees.

Payments can also be made at Student Services using eftpos or cash. If paying by cash you will be given a receipt immediately.

PHONE

There is a phone in Student Services for student use – please note it will not ring cell phones.

At NPGHS we have an ‘away for the day’ rule for cellphones. This means that:

- Phones are switched off and placed in a student’s school bag or in their pocket when on the school site, including interval and lunchtime, or
- Phones are not brought to school at all.

Our phone rules can be found on our website:

<https://www.npghs.school.nz/about/policy-documents>

REPORTING AND LEARNING CONFERENCES

Throughout the year students receive regular feedback on their lesson engagement, their grades and general progress within their subjects. This can be viewed in our secure KAMAR Portal.

Learning Conferences take place in Term 2, to discuss student progress across their subject areas.

Bookings for these interviews will be accessed via SchoolBridge. Booking details will be sent out to parents closer to the time.

SCHOOL APP - SCHOOLBRIDGE

New Plymouth Girls’ High School uses SchoolBridge and the SchoolBridge App for all communications with students and whānau.

Download the app by searching for SchoolBridge in your app store or by scanning the QR code on the inside back cover of this booklet.

SCHOOLBRIDGE LOGIN CREDENTIALS

Parents/Caregivers can login to SchoolBridge online, and in the App, using a variety of protocols: Facebook/Google/Microsoft/Yahoo. This depends on the email address that was given at enrolment. From the SchoolBridge dashboard you can access your child’s secure KAMAR portal.

Students have their own login credentials for SchoolBridge, KAMAR and Office 365 in order to access their unique work environment. Students will be given their login during Kāwai Huia time in the first week of term.

SCHOOL COUNCIL

The purpose of the School Council is to allow students a place to: voice their ideas, take action on student related matters, support charitable events, manage student funds, and to experience being student leaders. It also publishes our student-based newsletter the Pānui.

The School Council consists of the Manu Tāiko (Head Girl) and two Kaitiriwā (Deputy Head Girls), School Council Secretary, Waka Leaders and several of our other Year 13 leaders along with elected representatives from each of Years 9 -12.

SECURITY OF BELONGINGS

You can safeguard your property by the following means:

1. Keep any electronic devices safe.
2. Name all uniform items and stationery (including calculators) and other items of equipment.
3. Use your locker with a strong padlock for items you don't need during the day, but not for items of value.

STUDENT SERVICES

Students is a one-stop shop for student enquiries. It's the place to go for:

- making payments
- purchasing stationery
- making a phone call
- finding lost property
- getting uniform and leave passes
- or, if you are feeling unwell or need first aid.

STATIONERY

Although devices are used for learning, some stationery is still required. A copy of our stationery requirements can be found on our school website:

<https://www.npghs.school.nz/school-life/2025-stationery-lists>

Our preferred stationery supplier is OfficeMax. Go to **<https://www.myschool.co.nz/npghs>** to access our stationery list and shop online.

You can also purchase stationery at Student Services. It is open every day before school, at interval and lunchtime throughout the year.

STYMIE

Stymie is an anonymous reporting tool we use at NPGHS to report incidents of bullying and harm, safely and anonymously. It can be accessed at **www.stymie.co.nz**.

Any student, parent or member of the community can make a notification. It is another means of supporting our pastoral system at NPGHS. Only designated staff members will receive notifications via email when a report is made. We will deal with all reports according to our existing pastoral care system in an effort to continue to promote student wellbeing.

TEXTBOOKS & EQUIPMENT

All textbooks and equipment issued to you are your responsibility. If they are lost or damaged you will be charged for them.

At the end of the year you must ensure all books and equipment issued to you are returned and accounted for.

UNIFORM DISPENSATION

Any student wearing incorrect uniform items must report to Student Services before school from 8.30am. A correct item will be loaned to the student until they are able to rectify the issue themselves.

If there is a medical reason for wearing incorrect uniform items, students must bring a medical certificate explaining this to Student Services.

WAI ORA WELLNESS & SUPPORT

Our Wai Ora team includes Counsellors, a Social Worker and a designated First Aider who are here to help students with whatever concerns they might have.

Students are able to self-refer or if whānau or school staff are worried about a student they can reach out to our Wai Ora team to see how we can help.

What we do:

- Work closely with the NPGHS Pastoral Team to ensure a safe, inclusive and caring school environment.
- Meet with students individually or with support people/whānau to understand what's going on for them.
- Care for students who become unwell during school time.
- Support the management of chronic illness for students within the school environment.

- Refer to, and collaborate with, outside agencies and supports when needed.

Our guidance and health services are confidential and kept within the Wai Ora team unless there are serious and imminent concerns for safety, or unless agreed with the student.

Making an appointment:

If you need urgent support during the day you can go to Student Services, where our First Aider is based, and they will connect you with the right person.

To make an appointment you can message the person you want to see directly on Teams or their email or alternatively you can use an appointment request slip that can be found in Wai Ora or Student Services and put in the box by the door.

The Public Health Team from Te Whatu Ora are regularly at Wai Ora and you can request an appointment to see them also using the appointment slip system. They will contact you via email with your appointment time.





NPGHS CAFE

HUNGRY?

Come and see us at the NPGHS Cafe!

The Team have an amazing selection of freshly made food available at very affordable prices.

Opening Hours

Every School day,
Interval and Lunch Time



DAILY TIMETABLE

Monday, Wednesday, Thursday, Friday	
8.40am	Spell 1
9.40am	Spell 2
10.40am	Interval
11.10am	Spell 3
12.10pm	Spell 4
1.10pm	Kāwai Huia /Assemblies
1.30/1.35pm	Lunch
2.20pm	Spell 5
3.20pm	End of School

Tuesday	
9.10am	Spell 1
10.05am	Spell 2
11.00am	Interval
11.30am	Spell 3
12.30pm	Spell 4
1.30pm	Lunch
2.20pm	Spell 5
3.20pm	End of School

(Tuesday has a later start due to teacher Professional Learning)

HOW TO READ YOUR TIMETABLE

		Time class starts	Your Kāwai Huia	Your core class	Your Waka		
Year 9			TOBWR	9KAK	Tokomaru		
Term	Week	Monday	Tuesday	Wednesday	Thursday	Friday	
4	4						
Before School		8:10	8:10	8:10	8:10	8:10	
Spell 1		8:30 9MAT	9:10 FMC N11 9ART	JFR T2 8:40 9SPA	YWI O2 8:40 9FNT	MVE R6 8:40 9HEA	MVE R2
Spell 2		9:40 9SSC	DHA O7 10:03 9PED	CWA STD4 9:40 9DEN	DYO MB1 9:40 9SPA	YWI O2 9:40 9ENG	EKI N2
Interval		10:40	11:00	10:40	10:40	10:40	
Spell 3		11:10 9SCI	AFO N1 11:30 9SSC	DHA O7 11:10 9MAT	FMC N11 11:10 9DEN	DYO MB1 11:10 9SCI	AFO MB1
Spell 4		12:10 9ENG	EKI N2 12:25 9SCI	AFO N1 12:10 9SSC	DHA O7 12:10 9MAT	FMC N11 12:10 9ART	JFR T2
Kāwai Huia		1:10 KawaiHuia	BWR TU 1:20 KawaiHuia	BWR TU 1:10 KawaiHuia	BWR TU 1:10 KawaiHuia	BWR TU 1:10 KawaiHuia	BWR TU
Lunch		1:30	1:30	1:35	1:35	1:35	
Spell 5		2:20 9ART	JFR T3 2:25 9ENG	EKI N2 2:20 9SCI	AFO N1 2:20 9SSC	DHA O7 2:20 9PED	CWA STD4
After School		3:20	3:20	3:20	3:20	3:20	
Tutor		Ms B Wright	Dean Mrs C Brons Mr C Harris		Management Mr K Byrne		
New Plymouth Girls' High School							
		Your Kāwai Huia Teacher	Subject	Classroom	Class Teacher code (see website www.npghs.school.nz/about/our-people)		

We operate a 10-day timetable. If you don't know what day of the week it is you can check your timetable on the SchoolBridge app or ask at Student Services.

NPGHS BEHAVIOUR EXPECTATIONS

At NPGHS students are expected to demonstrate the school values **Whakamana/ Respect, Haepapa/Responsibility** and **Whanaungatanga/Relationships** at all times.

New Plymouth Girls' High School's classroom Kaupapa is:		
RESPECT/ WHAKAMANA looks like...	RESPONSIBILITY/ HAEPAPA looks like...	Positive RELATIONSHIPS/ WHANAUNGATANGA looks like...
<ul style="list-style-type: none"> • Doing what has been asked of you. • Listening carefully to the person speaking. • Following routines. • Looking after the rooms and equipment 	<ul style="list-style-type: none"> • Being on time, ready to work with the correct equipment. • Following instructions. • Staying on task and completing work to the best of my ability. • Asking for help appropriately when needed. • Asking politely if I need to leave the class. 	<ul style="list-style-type: none"> • Being kind to one another. • Encouraging and supporting each other. • Communicating positively and politely. • Sorting issues out in a calm and positive manner. • Positively working together.



PASTORAL CARE TEAM

Each Waka Huia at New Plymouth Girls' High School has two Deans, a Waka Kaitiaki and a Waka Amo. These are key people at the school that are in place to assist you as you become familiar with your new environment. Deans are special teachers who, in addition to teaching, oversee the daily care and management of a Waka Huia.

AOTEA



Ms Rebecca Crowe
rcrowe@npghs.school.nz

Waka Kaitiaki
(Head of Waka)



Mrs Stacey Colbourne
scolbourne@npghs.school.nz

Waka Amo (Waka Dean)

KURAHAUPO



Ms Bronya Mischefski
bmischefski@npghs.school.nz

Waka Kaitiaki
(Head of Waka)



Ms Lauren Dennehy
ldennehy@npghs.school.nz

Waka Amo (Waka Dean)

TAINUI



Mr Matt Coleman
mcoleman@npghs.school.nz

Waka Kaitiaki
(Head of Waka)



Ms Sally Ann James
sjames@npghs.school.nz

Waka Amo (Waka Dean)

TOKOMARU



Mrs Courtney Brons
cbrons@npghs.school.nz

Waka Kaitiaki
(Head of Waka)



Mr Karl Domeracki
kdomeracki@npghs.school.nz

Waka Amo (Waka Dean)

KĀWAI HUIA TEACHER

Your Kāwai Huia Teacher is your first point of contact and you will meet daily with them and the other students in your Kāwai Huia Group. Your Kāwai Huia group is a vertical group with a mixture of Year 9-13 students.

THE FIRST DAY FOR YEAR 9 STUDENTS 2026

DAY ONE – FRIDAY 30 JANUARY 2026

All new students (Year 9 and above) and parents are welcome to attend a Pōwhiri in the school Hall. Please meet outside the hall at 8:50am. Following the Pōwhiri, students will then spend the rest of this day in their Kāwai Huia class completing a range of orientation activities.

PŌWHIRI PROTOCOL

It is important for the manuhiri (new students) to understand that this is a formal proceeding that should be respected as such.

The manuhiri (new students) meet at the front of the hall waiting to be called on. The kaikaranga (woman caller) stands at the front. The seating arrangements are that the men are sitting at the front with the women seated behind.

KARANGA

The manuhiri are called on by the kaikaranga who begins proceedings. The manuhiri move up slowly behind the kaikaranga. Everyone remains standing until the Tangata Whenua (people of the land) motion everyone to sit. The kaikōrero (advocate) will stand and present their kōrero (speaking). This is followed by a waiata (song) that the group sings in support of their speakers.

DAY TWO – MONDAY 2 FEBRUARY 2026

8.40am start for all. The day will finish at 3.20pm. Your Kāwai Huia teacher will prepare you for this day.

WHAT TO BRING

On your first day of school please bring:

- Lunch & a drink, something to write on and a pen
- Laptop device
- P.E gear



Melody Gordon / Matilda Bublitz / Diya Barthi

Kaitiriwā (Deputy Head Girl) / Manu Tāiko (Head Girl) / Kaitiriwā (Deputy Head Girl)

LOOKING AHEAD IN 2026

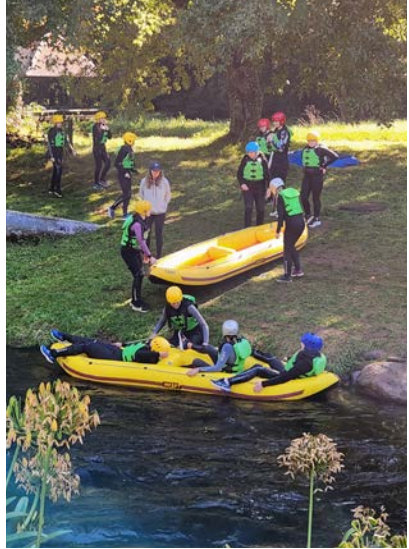
YEAR 9 OUTDOOR EDUCATION ACTIVITY DAYS

Get your kit ready – we're about to have a whole lot of fun!

The two-day Year 9 Outdoor Education Activity Days are in Week 1 of Term 2 and are a great opportunity for students to get to know the other students in their Year 9 core class, as well as some of the Year 13 leaders and teachers, in a fun and safe way. The focus of the Activity Days is to take students out of the classroom environment, allowing participation in team building activities full of adventure and challenge, while providing an additional opportunity to make new friends and develop positive relationships.

More information will be communicated closer to the time, but we look forward to seeing students get involved and thrive in this environment.

No payment is required for students to attend the Activity Days. The school covers the full cost as we believe its an extremely valuable experience for Year 9 students. This is however, a large expense to the school and we gladly welcome any donations toward the cost of the Activity Days. Any contribution will ensure that we can continue to offer opportunities such as these. The cost to the school per student is approximately \$120.



If you wish to make a donation, our bank details for online payment are:

NPGHS - School Board

15-3953-0478234-00

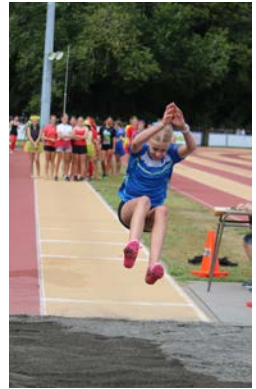
Please include your child's name, YR9ODE26 (Outdoor Education) and their Kawai Huia Group in the online payment.

ATHLETICS DAY

Our Athletics day is held at the TET Stadium in Inglewood. Students meet at school first then we all bus out to the track together. Students living south of New Plymouth may arrange to go directly there. Students will be back at school in time to link with the buses home.

Athletics day is fun-filled with competitive and non-competitive events, and relays to finish off the day. Sunblock and first aid will be on site along with food & drink stalls. We encourage students to dress in their Waka colours (with costumes easy enough to run in), add a little face paint with a sun hat and you are ready to go. Students can travel to and from this sports day in costume and they must remain at the venue for the entirety of the school day.

Parents & whānau are very welcome to come along and enjoy this event with the students.



SWIMMING SPORTS

Swimming sports is a fantastic day for the whole school with students dressing up in their waka colours and building Waka Spirit.

There are races for competitive swimmers with records to break, as well as fun boogie board, freestyle and backstroke races. Students may get selected to swim for their Waka relay team or their Kāwai Huia class relay team. Our Year 13 students compete in the Waka synchronised swimming event along with the Day Girls v Boarders and Staff v Year 13 races to finish off the day.

Parents and whānau are welcome to come along and enjoy the day with us.

It's a fun-filled day enjoyed by many.

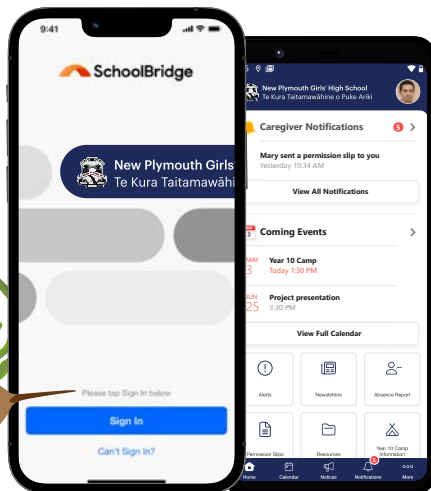
Download our school app today

Students:

- View your timetable
- Student ID cards
- School notices & alerts
- School links
- School calendar

Parents/Caregivers:

- View School notices & alerts
- Report absences
- Request passes
- View financial accounts
- School calendar
- EOTC information/permissions
- Access our secure KAMAR App



- Scan the QR Code to download. Or
- Search "**schoolbridge**" on your mobile AppStore or PlayStore.



STAY IN CONTACT



New Plymouth Girls' High School

www.npghs.school.nz

Phone: 06 757 3899

**42 Mangorei Road Strandon
New Plymouth 4312**

**Private Bag 2049
New Plymouth Central 4340**

Absences email:
absentee@npghs.school.nz

Enrolment email:
enrolments@npghs.school.nz

General enquiries email:
reception@npghs.school.nz

Uniform shop:
<https://npghs.nzuniforms.com>