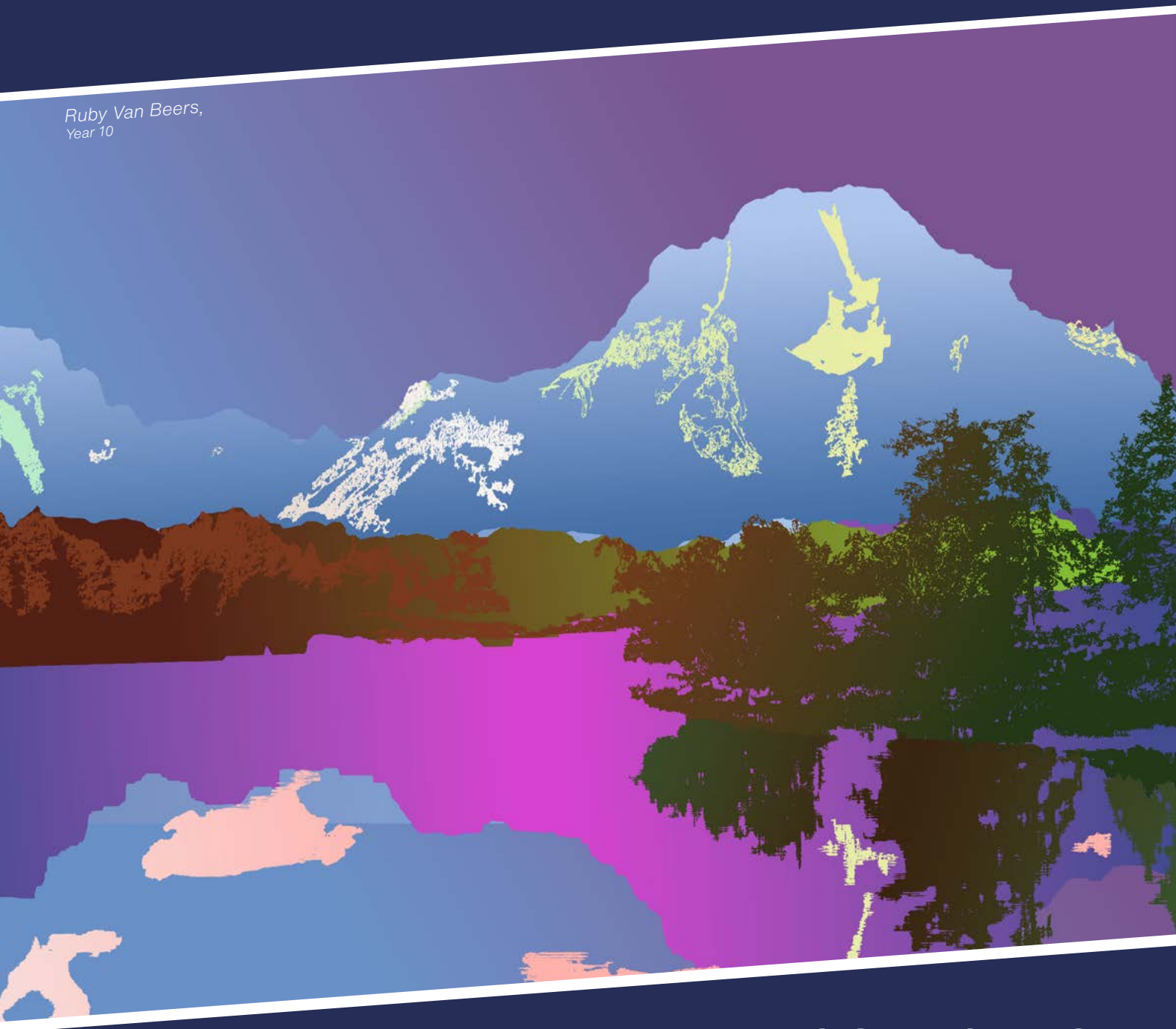




New Plymouth Girls' High School

Te Kura Taitamawāhine o Puke Ariki

Ruby Van Beers,
Year 10



PROSPECTUS

2026

www.npghs.school.nz

CONTENTS

- 01 Principal's Message
- 02 Vision | Mission
- 03 Our Values | Our Motto | Waka Huia
- 04 Pastoral Care
- 05 Awhina Learning Centre
- 06 Uniform
- 07 Curriculum
- 08 Subject Selection Guide
- 10 School Activities
- 12 International Students
- 13 Scotlands Hostel
- 14 Waimarie
- 15 School Facilities
- 16 Contact



PRINCIPAL'S MESSAGE

Tēnā koutou katoa

Embarking on the journey to high school is like setting off on a thrilling adventure! It's a time filled with new experiences, opportunities, and friendships waiting to be discovered. Imagine exploring diverse subjects that ignite your curiosity, participating in exciting extracurricular activities, and uncovering hidden talents you never knew you had. High school is a place where you can challenge yourself, grow, and create unforgettable memories. It's a fresh start, a chance to reinvent yourself, and a gateway to endless possibilities. So, gear up for an exhilarating ride—high school is where the adventure begins!

As well as the fun, we are deeply committed to the transformative power of education, empowering young people to harness their strengths and talents. Our students consistently surpass national averages in qualifications. This is a testament to the dedication of our teachers, the determination of our students, and the unwavering support of parents and whānau.

Our legacy of academic excellence is complemented by remarkable achievements in sports, arts, vocational pathways, and cultural activities. Students have the chance to explore these areas, nurturing their creativity, teamwork, leadership, balance, and self-awareness. We celebrate each student's unique talents and character, and partner with families and whānau to encourage students to find purpose, hope, and a sense of belonging. Our aim is to see our students emerge as creative, compassionate, knowledgeable, and capable individuals, proud of their education and ready to embrace the challenges of the future.

New Plymouth Girls' High School has been a cornerstone of our community since 1885, shaping the lives of countless individuals. Our onsite boarding hostel, Scotlands, is part of that history too. It accommodates around 120 students, offering a nurturing and supportive environment that fosters a sense of community and lasting friendships.

Our core values - Respect (Whakamana), Responsibility (Haepapa), and Positive Relationships (Whanaungatanga) - are encouraged in our daily interactions and behaviours. Students demonstrate these values as they navigate their journeys, fostering self-belief and confidence in their abilities. You'll see visual representations of these values on the pou at the corner and throughout the school, reminding us of what we commit to for ourselves and each other.

It is an honour to contribute to the education of young people, and our staff take pride in the progress and achievements of our students. Join us and become part of the NPGHS story!

Ngā mihi mahana,

Jacqui Brown
Principal





VISION

To develop educated, confident young adults of outstanding character.

MISSION

Each young person will have the opportunity to discover and develop the necessary knowledge, skills, values and character to enable them to fulfill their potential.

"To be yourself in a world that is constantly trying to make you something else is the greatest accomplishment" - Ralph Waldo Emerson.

Stepping through the door into high school may seem overwhelming - trust me, I have been there. But at New Plymouth Girls' High School, we encourage you to be authentically yourself. Because when you back yourself, stay true to yourself, and are proud of who you are, the self-belief you unlock is more powerful than any obstacle. This is where goals are not just met - goals are exceeded.

Be Unapologetically Yourself.

Ngā mihi

Harriet Muller,

Manu Tāiko / Head Girl, 2025



OUR VALUES

RESPECT

Whakamana

RESPONSIBILITY

Haepapa

RELATIONSHIPS

Whanaungatanga

OUR MOTTO

ET COMITATE

Friendship

Whakahoanga

ET VIRTUTE

Courage

Maia

ET SAPIENTIA

Wisdom

Matauranga

WAKA HUIA

Our Waka Huia are named after famous waka. All the waka have historical connections to Taranaki through iwi interactions and were great ocean going canoes that were used in the migrations that settled Aotearoa New Zealand.

AOTEA

KURAHAUPO

TOKOMARU

TAINUI



PASTORAL CARE

WAKA HUIA DEPUTY PRINCIPALS



Suzanne Bradburn
sbradburn@npghs.school.nz

AOTEAROA



Brett McFarlane
bmcfarlane@npghs.school.nz

KURAHAUPO



Stella Bond
sbond@npghs.school.nz

TAINUI



Kevin Byrne
kbyrne@npghs.school.nz

TOKOMARU

THE PASTORAL NETWORK

The Pastoral Network includes the Principal, Deputy Principals, Waka Kaitiaki & Waka Amo (Deans), Kāwai Huiā Teachers, Wai Ora Centre staff, Nurse, Careers Counsellor, HoD Learning Support and Resource Teacher of Learning & Behaviour. As a team, their role is to support and assist students through any personal, vocational or educational challenges. Our prime concern is caring for the needs of individual students and supporting their learning.

WAI ORA WELLNESS CENTRE

Services available at the Wai Ora Wellness Centre include counselling, advice and support, general health concerns, health education, and referral to other services. The Wai Ora staff, are available daily for students to make appointments or for parents to make contact with them. The Public Health Nurse and Adolescent Health Clinic are also situated within the Wai Ora Wellness Centre for students to access each week.



AWHINA LEARNING CENTRE



The Awhina Learning Centre (ALC) office, or Headquarters, is located next to the Wai Ora Wellness Centre, between the Stadium and the Hall.

Awhina Learning Centre provides a variety of supports, tailored to students' individual learning needs.

Student needs are identified through a variety of assessments, which help in creating personalised programmes. This approach involves collaboration between the student, their family, teachers, and the SENCO.

Learning is delivered with Teacher Aides in regular lessons, or in two distinct classroom settings:

- Awhina Focused Learning (AFL) is a learning intervention, primarily for students in years 9 and 10, designed to address specific learning gaps and to improve students' ability to access the curriculum. Some subjects are taught in the AFL classroom, while others take place in mainstream classes.
- Classroom 2 (C2) in contrast provides small group, subject-specific support to students across several sessions each week.

Students are referred to the Awhina Learning Centre by previous schools, teachers, counsellors, parents and through self-referral.

Learning Support is provided through the Awhina Learning Centre.

“Awhina” – to support/guide. Our goal is to provide every student with the support they need to reach their full potential and empower them to succeed.

CONTACT

Ms Dee Crawford
dcrawford@npghs.school.nz

HOD Learning Support
& SENCO

UNIFORM

New Plymouth Girls' High School students wear a simple and practical uniform throughout the year. Emphasis is placed on wearing the uniform correctly and with pride.

SHOP HOURS & PRICING

Our current shop hours, uniform price list and payment options are detailed on our website.

CONTACT

Telephone: 06 920 3260

Email: newplymouth@nzuniforms.com

REQUIRED UNIFORM

** All items are NPGHS Regulation uniform unless marked **

ALL YEAR LEVELS

Shirt: White shirt

Jersey: Navy merino (non-allergy) jersey

Footwear*: Black sandals or black shoes

- Sandals must have backstraps and be worn without socks or pantyhose/tights.
- Shoes must be low heeled, plain, polishable, and worn with plain black pantyhose/tights or black ankle socks.
- No sports shoes, boots, or canvas shoes

Jacket: School jacket only.

No other jackets to be worn

PE: PE shirt.

Black shorts/ trackpants*, sneakers.*

Protective gear*, e.g. mouth guard*

OPTIONAL: **Scarf:** Plain black/navy*

Headband: Plain black/navy*

Hijab: Plain navy*

Any additional clothing worn underneath the uniform (i.e. tee shirt / thermal top) must not be visible.

YEARS 9, 10 & 11

Skirt: Tartan skirt

Culottes/Shorts: Tartan culottes/shorts or navy shorts

Trousers: Navy trousers

le Lavalava: Navy le Lavalava

YEARS 12 & 13

Skirt: Navy skirt

Short/Trouser: Navy shorts or navy trousers

le Lavalava: Navy le Lavalava

OPTIONAL (Seniors)

Tie: NPGHS tie

Blazer: NPGHS blazer

Honours Blazer: NPGHS Honours blazer – awarded only

FORMAL DRESS

Representing NPGHS at formal occasions:

Regulation Blazer and navy skirt/trousers/le Lavalava, white shirt and tie

JEWELLERY & MAKEUP

See the school website for details.



CURRICULUM

Students should study the Curriculum information on the school website for details on the most appropriate subjects and levels according to their skills, interests, abilities and potential future career direction. (Offerings subject to change)

Year 9 - All students study all Learning Areas

Compulsory Subjects:

English, Food & Nutrition, Health, Physical Education, Mathematics, Science, Social Science, Te Reo Māori

Subject Selection:

Arts: TWO of Dance, Drama, Music, Visual Arts or Digital Visual Arts – not both

Technologies: TWO of Design Technology, Design & Visual Communication, Digital Technology, or Textiles Technology

Choice Option: ONE of Spanish, or another Arts or Technology not already chosen.

Students may be placed in one or more of the following subjects to support their learning needs: Literacy or Numeracy

Year 10 - All students study FIVE Learning Areas:

Compulsory Subjects:

English, Health, Physical Education, Mathematics, Science, Social Science

Students are able to select THREE options from the following:

Animal & Plant Science, Business Studies, Dance, Design Technology, Design & Visual Communication, Digital Technology, Digital Visual Arts, Drama, Food and Nutrition, French, Music, Spanish, Sports Education, Sustainability, Te Reo Māori, Textiles Technology and Visual Arts

Students may be placed in Literacy and/or Numeracy to support their learning needs. NCEA Level 1 courses are an option for students as appropriate.

Year 11 - Students select SIX subjects.

Compulsory Subjects:

English, Mathematics and a Science

AND

Students select THREE options from a list of approximately 25 subjects.

All Year 11 students take the compulsory Numeracy and Literacy corequisite course unless achieved prior.

Year 12 - Students select SIX subjects

Compulsory Subject:

English

AND

Students select FIVE options from a list of approximately 40 subjects

OR

Students may choose 'Shape your Future' an integrated project-based course including English and four further options.

Year 13 - Students select a full course of FIVE subjects and also have a study line.

Students select all of their subjects from a list of approximately 40 subjects

OR

Students may choose 'Shape your Future' an integrated project-based course including English and three further options.

NCEA Levels 1, 2 & 3 - Senior students can select courses from any NCEA level appropriate to their ability. Please note the preferred prior learning for each subject.

Alternative or more practically based courses are available in some subject areas. This range of specialist alternative courses includes a learning support programme. Timetabled and supplementary Vocational Training opportunities are available to senior students at NCEA Levels 1, 2, 3 and higher.

All Year 11, 12 and 13 students have one spell per week alternating between Mahi Tahī (Life Skills) and Wellbeing Programmes.



SUBJECT Selection Guide

LEARNING AREA	YEAR 9	YEAR 10
ARTS <i>NGA TOI</i>	Dance Digital Visual Arts Drama Music Visual Arts	Dance Digital Visual Arts Drama Music Visual Arts
ENGLISH <i>TE REO INGARIHI</i>	English Literacy	English Literacy
HEALTH AND PHYSICAL EDUCATION <i>HAUORA ME MAHI TINANA</i>	Food & Nutrition Health Physical Education	Food & Nutrition Health Physical Education Sports Education
INTEGRATED CURRICULUM <i>MARAU PĀHEKOHEKO</i>		
LANGUAGES <i>NGA REO</i>	Spanish Te Reo Māori	French Spanish Te Reo Māori
MATHEMATICS <i>PANGARAU</i>	Mathematics Numeracy	Mathematics Numeracy
SCIENCES <i>PUTAIAO</i>	Science	Animal & Plant Science Science
SOCIAL SCIENCES <i>TIKANGA A IWI</i>	Social Science	Business Studies Social Science
TECHNOLOGY <i>HANGARAU</i>	Design Technology Design & Visual Communication Digital Technology Textiles Technology	Design Technology Design & Visual Communication Digital Technology Textiles Technology
VOCATIONAL TRAINING <i>RAPUARA</i>		

Placement is subject to course availability at the time of enrolment.

All courses are subject to student numbers and staffing

ACADEMIC LEVELS:

Compulsory Course
 Alternative Course

LEVEL 1	LEVEL 2	LEVEL 3
Dance Digital Visual Arts Drama Māori Performing Arts Music Visual Arts	Art Design Art History Dance Drama Māori Performing Arts Music Photography Visual Arts	Art Design Art History Dance Drama Māori Performing Arts Music Painting Photography Printmaking Sculpture
English	English	English
Health Studies (Food & Nutrition) Health Studies (Health) Hospitality Sports Science & Physical Education	Food & Nutrition Health Hospitality Sports Science & Physical Education	Food & Nutrition Health Sports Science & Physical Education
	Shape Your Future	Shape Your Future
French Spanish Te Reo Māori	French Spanish Te Reo Māori	French Spanish Te Reo Māori
Mathematics and Statistics	Mathematics Statistics	Calculus Statistics External Statistics Internal
Animal & Plant Science Science	Animal & Plant Science Biology Chemistry Physics Science Internal	Animal & Plant Science Biology Chemistry Physics
Commerce Geography History Social Studies	Accounting Classical Studies Economics Enterprise Studies Geography History Media Studies Social Studies Tourism	Accounting Classical Studies Economics Enterprise Studies Geography History Media Studies Social Studies Tourism
Design Technology Design & Visual Communication Digital Technology Textiles Technology	Design Technology Design & Visual Communication Digital Technology Textiles Technology	Design Technology Design & Visual Communication Digital Technology Textiles Technology
	Classroom Career Development (STAR) Trades Academy Workplace Training (Gateway)	Classroom Career Development (STAR) Trades Academy Workplace Training (Gateway) 3+2 Career Training (Trades Academy)

SCHOOL ACTIVITIES

SPORT

Adventure Racing
Athletics and Cross Country
Badminton
Basketball
Cricket
Equestrian
Football
Futsal
Golf
Hockey
Netball
Orienteering and Rogaine
Rowing
Rugby Union - 7's and 15's
Squash
Tennis
Touch
Volleyball – Beach and Indoor
Waka Ama

TSSA EVENT PARTICIPATION

Athletics
3 x 3 Basektball
Bowls – Indoor and Lawn
BMX
Cricket (6 a side)
Croquet (Golf) Cross Country
Golf Gymnastics Ki ō Rahi
Mountain Biking
Multi Sports - Duathlon/Triathlon Road Relays
Rugby League
Sailing
Surfing
Squash Swimming
Table Tennis
Tennis
Volleyball

OUTDOOR EDUCATION

Hillary Outdoors Camp
Outward Bound
Spirit of Adventure
TOPEC Camp (Taranaki Outdoor Pursuits
& Education Centre)
Year 9 Activity Days (2 days - Term 1)
Year 9 Activities (3 days - end of year)
Year 10 Camp/ Activities (3 days - end of year)



GROUPS/ COMMITTEES/ LEADERSHIP

Aspiring Leaders Forum
Dance Committee
Drama Committee
Duke of Edinburgh
Environment Group
Global Young Leaders Conference
Honohono Committee
Kāwai Huia Co-Leaders
LGBTQA+
Library Group
Model United Nations - (*Taranaki & National Conferences*)
Music Committee
Relay for Life
SADD - (*Students Against Dangerous Driving*)
School Council
Security Council - (*Central North Island*)
Sports Council – Senior and Junior
Visual Arts Committee
World Vision 40 Hour Challenge
Writers' Group
Year 13 Leadership Positions
Y-Lead
Young Enterprise Scheme
Youth Congress - (UNICEF)
Youth Declaration



CULTURAL

Barbershop Singing
Chamber Music
Concert Band
Jazz Band
Jubilate Choir
Kapa Haka
Karaoke Club
Music Instrument Tuition
Musical Production (Biennial)
Orchestra
Pacific Project - (UN Youth)
Pasifika
Percussion Group
Rock Quest Bands
Shakespeare Festival
Ukulele Group



INTERNATIONAL STUDENTS

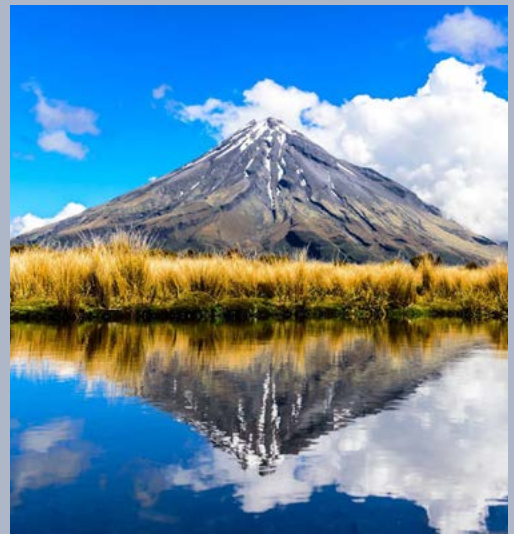
We welcome students to come and join our family and create kiwi connections in our world-famous Taranaki region.

New Plymouth Girls' High School welcomes international students from around the world. We value the richness and diversity that they offer to the school, and we enjoy showing our students a real kiwi experience.

We accept students for stays from one term up to a full year. Students have the option to select from our school hostel or homestay if they prefer. The school is set in attractive spacious grounds and is close to the beach. The city is a short walk and for students who like to be a little adventurous, our wonderful mountain is only a 30-minute drive away.

We listen to the needs of our overseas students and collaborate with them to support them in achieving their goals. On arrival we provide an orientation programme and have a buddy system to ensure students feel welcome and comfortable. Buddy students assist International Students in moving around the school and understanding the school routines and expectations. International Students are supported by the International Co-ordinator, Deans, their Kāwai Huia teacher and the International Global Perspectives Student Leader.

Students have a vast range of subjects to select from and ESOL support is also on offer for those who need it. Students are also encouraged to take part in a wide range of co-curricular activities.



CONTACT

www.npghs.school.nz

international@npghs.school.nz

Mrs Kerrie Wootton

kwootton@npghs.school.nz



SCOTLANDS HOSTEL



Boarding at Scotlands Hostel offers a warm, welcoming, and supportive environment where students are encouraged to excel academically and actively participate in both school and hostel life. Whether it's through sports, cultural activities, music, or community involvement, boarders can engage in a range of experiences that foster a strong sense of belonging. The independence, maturity, and lifelong friendships gained through boarding provide an excellent foundation for adult life.

Our hostel is guided by the core values of Whakamana (Respect), Haepapa (Responsibility), and Whanaungatanga (Relationships), which shape the way we live and interact with each other.

At Scotlands Hostel, we're dedicated to helping students grow academically, socially, and personally, setting them up for success in the years to come.

Key features of the Hostel include:

- A connected complex with small group units for a close-knit community
- Access to the school grounds and facilities beyond the school day
- Approximately 120 boarders - Years 9 to 13
- Excellent staff/student ratio with active 24-hour care
- Supervised prep Monday to Thursday
- Clear kaupapa, expectations & guidelines with flexibility to meet individual needs
- Leadership opportunities and training
- A rich and diverse cultural environment that values every individual

"Living in a hostel isn't just about having a place to stay, it's something bigger. It's late-night talks that turn into lifelong friendships, helping each other through tough times, and celebrating every success like a family. The hostel becomes a second home, filled with laughter, challenges, and memories that shape who we are. When it's time to leave, we're not just saying goodbye to a building, we're leaving behind a family we'll always carry with us."

Macy Death – Head Boarder 2025



CONTACT

www.npghs.school.nz
hostelenquiries@npghs.school.nz

WAIMARIE COMPLEX AND HIGH NEEDS CENTRE

Waimarie is our Complex and High Needs Centre, specifically designed to provide an educational setting for students with profound physical and/or intellectual disabilities. This is achieved through the provision of individualised, holistic, multi-sensory and life-skills based curriculum. Physical or occupational therapies may be provided. Learning is centered around developing key competencies and communication strategies.

Opportunities for involvement with mainstream peers and classes are utilised when appropriate. The students in Waimarie have much to offer those in the wider school. Community engagement is also a key part of the Waimarie programmes with students regularly participating with local organisations such as WITT, Riding for the Disabled, the Sport Taranaki program, Sailability, TSSSA and Special Olympics events.



The guiding philosophy is to enable these unique students to reach their full potential by offering age and developmental stage appropriate learning opportunities.

CONTACT

Mrs Sarah Sampson
ssampson@npghs.school.nz

Head of Waimarie

SCHOOL FACILITIES



At New Plymouth Girls' High School, students have a wide variety of facilities available to them on campus.

- Whare - Tuhonohono
- Sports Fields, Netball and Tennis Courts
- Gymnasiums (2)
- Drama Studios
- Dance Studio
- Multi-resource Library, Network, Internet Link, Computers
- Careers Information Centre
- Learning Support Centre
- Wireless Campus
- Technology Suite
- Photography Studio
- Music – Practice Rooms, Rehearsal Rooms, dedicated Rock Band and Singing Rooms
- Café (Tuckshop)
- Wai Ora Health Centre with a Nurse, Counsellor and Social Worker



CONTACT

Ph: +64 6 757 3899
www.npghs.school.nz
enrolments@npghs.school.nz
New Plymouth Girls' High School
Private Bag 2049
New Plymouth Central
New Plymouth 4340

ENROLMENTS

We welcome enrolment applications from students at all levels. Enrolment conversations will be conducted at the main contributing schools in the New Plymouth district during Term 3.

The Open Evening for 2026 enrolments is Thursday 24 July 2025 from 3.30 – 6.30pm

Enquiries are welcome at any time – just contact the school office or email: enrolments@npghs.school.nz

ONLINE ENROLMENTS

To enrol online go to our website enrolment page: <https://www.npghs.school.nz/enrolment/welcome> and select our Online Enrolment Form for School and Hostel

HOSTEL

Enrolment enquiries to enrolments@npghs.school.nz

Or visit the boarding section our website: <https://www.npghs.school.nz/boarding/scotlands-hostel>

Ph: +64 6 7573848

The Hostel Open Day for 2026 enrolments is Thursday 24 July 2025 from 1.00 – 3.00pm.

To enrol at the Hostel please select 'Full' as the Boarder Status when filling in the NPGHS Online Enrolment form.



"I have loved Girl's High so far and there are LOTS of opportunities to be involved with. High school is definitely a step up from Intermediate, but you will get used to it pretty fast. I have realised that even though it can be scary going to a massive school you can have lots of fun and make so many friends! Another thing to note is that you'll be very fit from going up and down all of the stairs."

Emily – Year 9



Jane Willetts, Year 9



Martha Simon, Year 12



Mia Padrutt, Year 13



Olivia Corin, Year 12



New Plymouth Girls' High School
Te Kura Taitamawāhine o Puke Ariki